

ISO-Range : K10

### Chemical Data

Co (%) : 6

WC incl. Doping (%) : 94

### Physical Data

Density (g/cm<sup>3</sup>) : 14,8

### Metallographic Data

Porosity

≤ 10 μm A : ≤02

10 - 25 μm B : 00

C : 00

Hardness

HV 30 : 1900

HRA : 93,8

### Microstructure

Tungsten Carbide α : Ø 0,6 μm

Binding Phase β : unif. distr.

Mixed Carbide γ : -

Eta Phase η : -

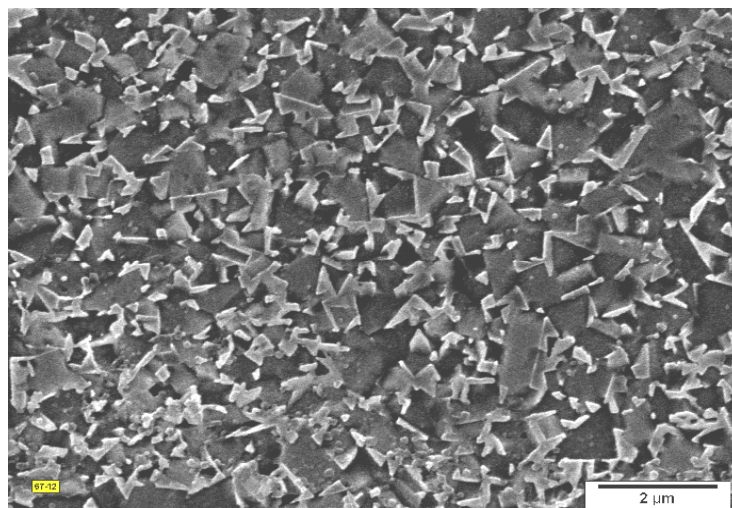
Transverse Rupture Strength

(N/mm<sup>2</sup>) : >3900

(1000 psi) : >566

K<sub>Ic</sub>\* (Shetty)

(MNm<sup>-3/2</sup>) : 9,0



Microstructure 2' Etching

SEM-Micrograph 8.500x

### Areas of Application

Grey cast iron

Unalloyed steels

Plastics